

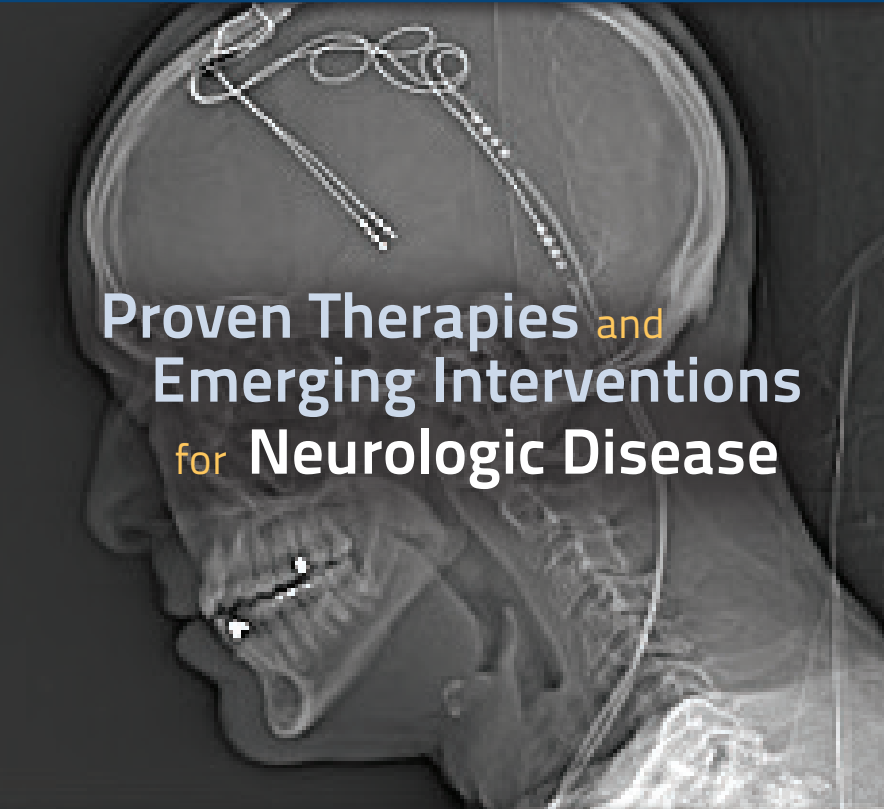


David Geffen  
School of Medicine

# NEURAL INTERFACES

**UCLA**

for Therapeutic  
Interventions



Proven Therapies and  
Emerging Interventions  
for Neurologic Disease

OCTOBER 29, 2016

Tamkin Auditorium  
Ronald Reagan UCLA Medical Center  
Los Angeles, California

**CME** OFFICE OF  
CONTINUING  
MEDICAL  
EDUCATION

DAVID GEFFEN SCHOOL OF MEDICINE at UCLA

## COURSE DESCRIPTION

This comprehensive 1 day continuing medical education (CME) program in neuromodulation features an outstanding faculty from the Departments of Neurosurgery, Neurology, and Anesthesiology at the David Geffen School of Medicine at UCLA. The purpose of the course is to provide an update on the latest multidisciplinary management and application of medical devices for an array of neurologic diagnoses, including movement disorders, epilepsy, chronic pain, and head and facial pain. There will be specific emphasis on new and emerging treatment options, including deep brain stimulation (DBS), responsive neurostimulation, emerging neurotechnologies, and therapies on the horizon. Alternative treatments, including first-line medical management, botulinum toxin therapy, and adjunctive therapies will also be discussed. The course will focus on personalizing therapy, both with respect to patient selection and targeting therapy. To integrate and ensure audience participation, patient testimonials will take place throughout the day. Attendees are encouraged to bring in their own cases for discussion.

## TARGET AUDIENCE

Neurosurgeons (functional and general), neurologists (general, movement disorder, and epilepsy), psychiatrists, psychologists, pain management physicians, primary care physicians, allied-health professionals, and neurosurgery, neurology, and psychiatry residents and fellows

## COURSE OBJECTIVES

At the conclusion of this activity, participants should be better able to:

- Describe first line medical therapies for movement disorders, epilepsy and pain
- Understand the role and indications for neuromodulatory treatments
- Understand indications, approaches, and methods for ablative procedures for chronic neurologic conditions
- Describe the multi-modal management of head and facial pain

## ACCREDITATION

The Office of Continuing Medical Education, David Geffen School of Medicine at UCLA is accredited by the Accreditation Council for Continuing Medical Education to provide continuing medical education for physicians.

The Office of Continuing Medical Education, David Geffen School of Medicine at UCLA designates this live activity for a maximum of 7 *AMA PRA Category 1 Credits*<sup>™</sup>. Physicians should claim only the credit commensurate with the extent of their participation in the activity.

This CME activity meets the requirements, under California Assembly Bill 1195, continuing education and cultural and linguistic competency.

**Disclosure** The FDA has issued a concept paper which classifies commercial support of scientific and educational programs as promotional unless it can be affirmed that the program is "truly independent" and free of commercial influence. In addition to independence, the FDA requires that non-promotional, commercially supported education be objective, balanced, and scientifically rigorous. The policy further states that all potential conflicts of interest of the CME staff and faculty be fully disclosed to the program's participants. In addition, policy of the Accreditation Council for Continuing Medical Education now mandates that the provider adequately manages all identified potential conflicts of interest prior to the program. We at UCLA, fully endorse the letter and spirit of these concepts.

## COURSE DIRECTOR

**Nader Pouratian, MD, PhD**

Associate Professor\*  
UCLA Department of Neurosurgery  
Neuromodulation for Movement Disorders & Pain  
Peripheral Nerve Surgery  
Radiosurgery

# UCLA FACULTY

**Ausaf Bari, MD, PhD**

Assistant Professor\*  
Department of Neurosurgery

**Yvette M. Bordelon, MD, PhD**

Associate Clinical Professor of Neurology\*  
Division of Movement Disorders

**Dawn Eliashiv, MD**

Professor of Neurology\*  
Co-Director, UCLA Seizure Disorder Center

**Itzhak Fried, MD, PhD**

Professor in Residence\*  
Department of Neurosurgery  
Director, Epilepsy Surgery Program

**Mollie Johnston, MD**

HS Clinical Assistant Professor\*  
Department of Neurology  
Headache Research and Treatment Program

**Jae Jung, MD**

Assistant Clinical Professor\*  
Department of Orthopaedic Surgery  
Pain Medicine

**Adrienne Keener, MD**

Assistant Professor in Residence\*  
Movement Disorders Program  
Department of Neurology

**Won Kim, MD**

Assistant Clinical Professor\*  
Department of Neurosurgery

**Joshua Prager, MD**

Director, Center for the Rehabilitation  
of Pain Syndromes (CRPS)  
Voluntary Assistant Clinical Professor\*  
Department of Anesthesiology

**John Stern, MD**

Professor of Neurology\*  
Director, Epilepsy Clinical Program  
Co-Director, Seizure Disorder Center

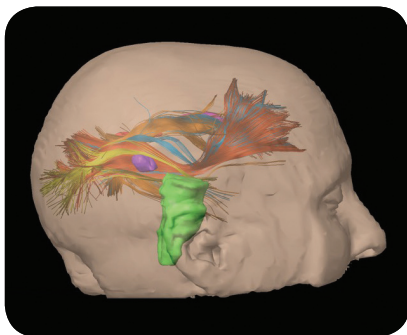
**Allan D. Wu, MD**

Associate Professor of Neurology\*  
Division of Movement Disorders

**Irene Wu, MD**

Assistant Director  
UCLA Comprehensive Pain Center  
Assistant Clinical Professor\*  
Department of Anesthesiology

\*David Geffen School of Medicine at UCLA



SATURDAY, OCTOBER 29, 2016

7:30 am Breakfast and Registration

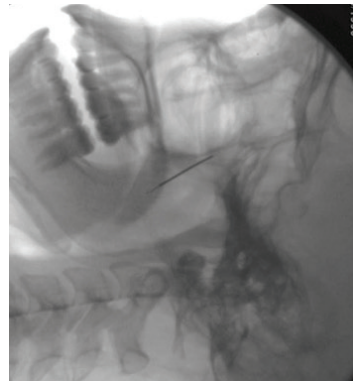
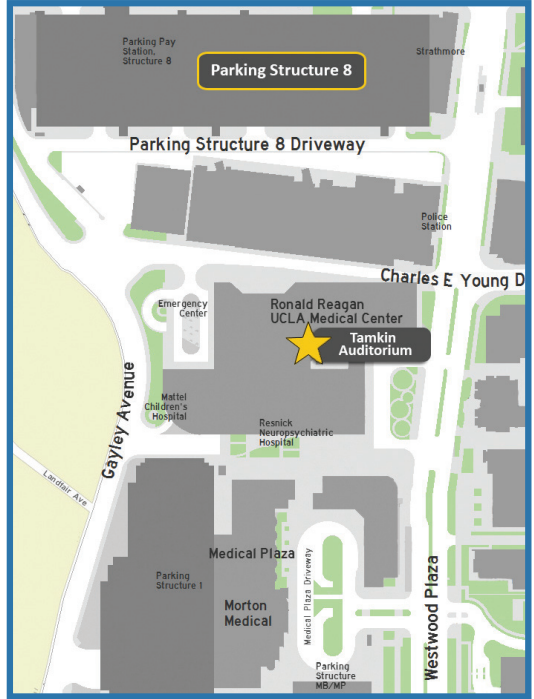
**INTRODUCTION**8:15 **Welcome**  
Nader Pouratian, MD, PhD**MOVEMENT DISORDERS**8:20 **Parkinson's Disease: Therapeutic Challenges and Opportunities**  
Adrienne Keener, MD8:40 **Parkinson's Disease and Essential Tremor:  
Indications and Timing for Surgery**  
Yvette M. Bordelon, MD, PhD9:00 **Dystonia: Botulinum Toxin and Medical Therapy**  
Allan D. Wu, MD9:20 **DBS for Movement Disorders:  
The Team, Techniques, Targets and Outcomes**  
Ausaf Bari, MD, PhD9:40 **Surgical Alternatives:  
Radiofrequency, Radiosurgery, and Focused Ultrasound**  
Nader Pouratian, MD, PhD10:00 **Emerging DBS Technologies:  
Constant Voltage vs. Constant Current  
Current Steering  
Asleep vs. Awake DBS Implantation  
New Applications: Tourette's, OCD, and Beyond**  
Ausaf Bari, MD, PhD and Nader Pouratian, MD, PhD10:30 **Break****EPILEPSY**11:00 **Epilepsy Surgery Evaluation: Patterns and Indications**  
Dawn Eliashiv, MD11:20 **Resective Surgery for Epilepsy**  
Itzhak Fried, MD, PhD1:40 **Vagus Nerve Stimulation for Epilepsy**  
Ausaf Bari, MD, PhD**EPILEPSY (CONTINUED)**12:00 **MR Guided Laser Ablation for Epilepsy**  
Itzhak Fried, MD, PhD12:20 **Emerging Epilepsy Technologies:  
Responsive Neuro Stimulation  
Anterior Nucleus DBS**  
John Stern, MD12:50 **Epilepsy Q&A**1:00 **Lunch****PAIN**2:00 **Spinal Cord Stimulation for Failed Back Syndrome**  
Irene Wu, MD2:20 **Spinal Cord Stimulation for CRPS**  
Joshua Prager, MD2:40 **Ablative Procedures for Pain: DREZ, Cordotomy, and Cingulotomy**  
Won Kim, MD3:00 **Emerging Neuromodulation Approaches for Pain:  
High Frequency Stimulation  
Generators: Primary Cell, Rechargeable, or External**  
Jae Jung, MD3:50 **Break****HEAD AND FACIAL PAIN**4:05 **Trigeminal Neuralgia: MVD, SRS, and Percutaneous Options**  
Won Kim, MD4:05 **Occipital Neuralgia: Decompression, Neurectomy or Stimulation**  
Nader Pouratian, MD, PhD4:05 **Migraine: Botulinum Toxin, Decompression, and Stimulation**  
Mollie Johnston, MD5:15 **Adjourn**

# COURSE LOCATION

Tamkin Auditorium - Ronald Reagan UCLA Medical Center  
757 Westwood Plaza  
Los Angeles, CA 90095

## Parking:

Please park in lot 8. A parking attendant will be on duty from 7:00-9:00 AM. If you arrive outside of this time frame, please visit the parking kiosk on Westwood Plaza to pay for your parking permit. Participants are responsible to pay for their own parking charges at a rate of \$12 per vehicle, cash only.



NEURAL INTERFACES FOR THERAPEUTIC INTERVENTIONS COURSE

COURSE# M167-9

<b>Tuition:</b> Physicians	\$ 150
Nurses & Allied Health	\$ 75
Trainees	\$ 25

Please print clearly

Specialty \_\_\_\_\_ Degree \_\_\_\_\_

Name (First,Middle,Last) \_\_\_\_\_

Address \_\_\_\_\_

City,State,Zip \_\_\_\_\_

(Area Code) Business Phone \_\_\_\_\_ (Area Code) Fax Number \_\_\_\_\_

E-mail Address \_\_\_\_\_

Last 4 digits of your Social Security Number \_\_\_\_\_

Course Enrollment Options

- Check enclosed, payable to: **Regents of the University of California**
- Please charge my credit card:  AMEX  Discover  MasterCard  Visa

Card Number \_\_\_\_\_ Exp.Date \_\_\_\_\_

Signature \_\_\_\_\_

Mail completed enrollment form to:  
**Office of Continuing Medical Education**  
**David Geffen School of Medicine at UCLA**  
**NIFTI**  
**10920 Wilshire Blvd., Suite 1060**  
**Los Angeles, CA 90024**

Fax enrollment form to: **310-794-2624**

Register **by phone** with an American Express, Discover, MasterCard or Visa: **310-794-2620**

Register **online** with an American Express, Discover, MasterCard or Visa:

[www.cme.ucla.edu/courses](http://www.cme.ucla.edu/courses)

REFUNDS: Cancellations must be received in writing by September 30, 2016, and will be subject to a \$50 processing fee. No refunds will be given after that date. If for any reason the course must be canceled, discontinued, or rescheduled by the Office of CME, a full refund will be provided.

# NEURAL INTERFACES for Therapeutic Interventions

UCLA

Office of Continuing Medical Education  
David Geffen School of Medicine at UCLA  
405 Hilgard Avenue  
Box 956938  
Los Angeles, CA 90095-6938

Presented by:



DAVID GEFKEN SCHOOL OF MEDICINE at UCLA



NONPROFIT ORG.  
U.S. POSTAGE  
PAID  
UCLA