



David Geffen
School of Medicine

PE and U: A Multidisciplinary Approach to Pulmonary Embolism Care

November 17, 2018
UCLA Meyer and Renee Luskin
Conference Center
Los Angeles, California

CME OFFICE OF
CONTINUING
MEDICAL
EDUCATION

DAVID GEFFEN SCHOOL OF MEDICINE at UCLA

Course Description

This course explores the most challenging management problems that clinicians face when treating patients with pulmonary embolism (PE) and the complications of this important and potentially fatal condition. Distinguished faculty from multiple specialties (pulmonary/critical care, cardiology, interventional radiology, emergency medicine, anesthesia/critical care, thoracic surgery, and hematology/oncology) will present current information in the areas of pulmonary embolism pathophysiology, epidemiology, risk factors, diagnosis, risk stratification, medical and interventional management, novel treatments, outcomes, and complications. The conference also emphasizes interaction between participants and faculty and allows ample time for case presentations and group panel discussions with a specific emphasis on the practicalities of forming a multidisciplinary Pulmonary Embolism Response Team (PERT). The combination of didactics with a virtual PERT meeting ensures an outstanding interactive educational experience for attendees.

Course Objectives

At the completion of this program, participants should be better able to:

- Understand key aspects of the latest advances in the pathophysiology, risk factors, and diagnosis of PE
- Utilize echocardiogram and other imaging modalities in the evaluation of patients with suspected and confirmed PE
- Risk stratify patients into low-risk, submassive, and massive PE categories to better identify populations that are high risk for morbidity and mortality from their PE
- Manage patients with both low-risk and high-risk PE with a variety of treatment options, including anticoagulation, medical and interventional lysis strategies, and surgical therapies
- Recognize the potential short-term and long-term complications from PE and how to prevent and treat them
- Highlight unique patient populations with PE and their specific treatment challenges
- Promote and enhance coordinated multidisciplinary care of PE patients with a specific focus on the use of PERT teams

Target Audience

This course is targeted towards physicians active in the diagnosis and management of PE and Venous ThromboEmbolism (VTE), including pulmonology, critical care, hematology, cardiology, emergency medicine, interventional radiology, cardiac surgery, internal medicine, radiology and anesthesiology. Fellows, residents and allied health professionals such as nurse practitioners will also gain invaluable knowledge.

Faculty

COURSE DIRECTORS

John Moriarty, MD, FSIR

Co-Director, UCLA PERT
Associate Professor, Radiology and Medicine
Interventional Radiology
David Geffen School of Medicine at UCLA

Marcella Calfon Press, MD, PhD, FACC

Co-Director, UCLA PERT
Assistant Clinical Professor
Division of Cardiology, Department of Medicine
David Geffen School of Medicine at UCLA

Tisha Wang, MD

Co-Director, UCLA PERT
Associate Professor of Clinical Medicine
Clinical Division Chief
Fellowship Program Director
Division of Pulmonary and Critical Care Medicine, Department of Medicine
David Geffen School of Medicine at UCLA

COURSE FACULTY

Olcay Aksoy, MD, FACC

Assistant Professor of Medicine
Division of Cardiology, Department of Medicine
David Geffen School of Medicine at UCLA

Igor Barjaktarevic, MD, PhD

Assistant Professor
Medical Director, COPD Program
Director of Critical Care Ultrasound
Division of Pulmonary and Critical Care, Department of Medicine
David Geffen School of Medicine at UCLA

Richard Channick, MD

Director, Pulmonary Hypertension and Thromboendarterectomy Program
Massachusetts General Hospital
Harvard Medical School
Boston, Massachusetts

Oren Friedman, MD

Associate Director, Cardiac Surgery ICU
Department of Surgery
Cedars-Sinai Medical Center
Los Angeles, California

Scott Genshaft, MD

Assistant Professor
Thoracic and Interventional Radiology
David Geffen School of Medicine at UCLA

Vadim Gudzenko, MD

Associate Clinical Professor
Director, ACCM Fellowship
Medical Director, Adult ECMO Service
Division of Critical Care, Department of Anesthesiology and Perioperative Care
David Geffen School of Medicine at UCLA

Kanwar Kahlon, MD

Assistant Professor
Division of Hematology/Oncology
David Geffen School of Medicine at UCLA

Stephen Kee, MD, MMM, FSIR

Professor of Radiology
Division Chief, Interventional Radiology
David Geffen School of Medicine at UCLA

Gopi Manthripragada, MD

Assistant Professor of Clinical Medicine
Division of Cardiology, Department of Medicine
David Geffen School of Medicine at UCLA

Lynne McCullough, MD, FACEP

Professor
Department of Emergency Medicine
Medical Director, Ronald UCLA Reagan Emergency Department
David Geffen School of Medicine at UCLA

Adam Plotnik, MD

Assistant Professor
Co-Director of UCLA IVC Filter Clinic
Division of Interventional Radiology, Department of Radiological Sciences
David Geffen School of Medicine at UCLA

Nida Qadir, MD

Assistant Clinical Professor of Medicine
Division of Pulmonary and Critical Care Medicine, Department of Medicine
David Geffen School of Medicine at UCLA

Danny Razmy, MD

Surgical Director, Lung Transplant Program
Director, Robotic & Minimally Invasive Cardiac Surgery
Cedars-Sinai Medical Center
Los Angeles, California

Rajan Saggar, MD

Associate Professor of Medicine
Director, Medical Intensive Care Unit
Lung and Heart-Lung Transplant and Pulmonary Hypertension Programs
David Geffen School of Medicine at UCLA

Jonathan Soverow, MD, MPH

Health Sciences Assistant Clinical Professor of Medicine
Associate Director, Cardiac Catheterization Laboratory
Olive View-UCLA Medical Center
David Geffen School of Medicine at UCLA

Victor Tapson, MD

Director, Venous Thromboembolism and Pulmonary Vascular Disease Research
Program Director, Clinical Research, Women's Guild Lung Institute
Associate Director, Pulmonary and Critical Care Medicine
Cedars-Sinai Medical Center
Los Angeles, California

Aaron S. Weinberg, MD, MPhil

Pulmonary & Critical Care Faculty Physician
Associate Director, VTE Disease and Research
Division of Pulmonary & Critical Care
Department of Internal Medicine
Co-Communications Chair, National PERT Consortium
Cedars-Sinai Medical Center
Los Angeles, California

Deborah Wong, MD, PhD

Assistant Clinical Professor
Division of Hematology/Oncology, Department of Medicine
David Geffen School of Medicine at UCLA

Eric H. Yang, MD, FACC, FASE

Assistant Clinical Professor of Medicine
Director, UCLA Cardio-Oncology Program
Associate Program Director, Cardiovascular Diseases Fellowship
Division of Cardiology, Department of Medicine
David Geffen School of Medicine at UCLA

Program

Saturday, November 17, 2018

7:00 REGISTRATION AND BREAKFAST

Acute PE: Diagnosis and Triage

Moderator: *John Moriarty, MD, FSIR*

8:00 **Welcome and Introductory Remarks**

John Moriarty, MD, FSIR

8:05 **Acute PE: Scope of the Problem**

Tisha Wang, MD

8:20 **Risk Stratification in Acute PE: Half the Battle**

Marcella Calfon Press, MD, PhD, FACC

8:35 **Imaging in PE: Who, How, and What's Next**

Scott Genshaft, MD

8:50 **Panel and Q&A**

Low Risk PE

Moderator: *Tisha Wang, MD*

9:00 **Anticoagulation for PE in the Age of DOACS**

Kanwar Kahlon, MD

9:15 **Rapid Discharge from ER: When is it Safe to Send Home**

Lynne McCullough, MD, FACEP

9:30 **Cancer and Thrombophilia Work Up: Who and How to Investigate Further**

Deborah Wong, MD, PhD

9:45 **Panel and Q&A**

10:00 **BREAK**

Submassive PE

Moderator: *Marcella Calfon Press, MD, PhD, FACC*

10:30 **ECHO of the In-Danger RV**

Eric H. Yang, MD, FACC, FASE

10:45 **Systemic Lysis for Submassive PE**

Nida Qadir, MD

11:00 **Catheter Directed Therapy for Submassive PE: Not Just Lysis**

Stephen Kee, MD, MMM, FSIR

11:15 **Panel and Q&A**

Moderator: *John Moriarty, MD, FSIR*

11:25 **KEYNOTE LECTURE**

PE Response Teams: The Way of the Future?

Richard Channick, MD

12:00 **LUNCH**

Submassive and Massive PE

Moderator: *Tisha Wang, MD*

- 1:00 **IVC Filters: When, and When Not, to Use in Acute PE**
Adam Plotnik, MD
- 1:15 **Surgical Management of Acute PE**
Danny Razmy, MD
- 1:30 **Clot in Motion: PE Response Team in Motion**
John Moriarty, MD, FSIR
- 1:45 **Critical Care of the Massive PE Patient**
Igor Barjaktarevic, MD, PhD
- 2:00 **Systemic Lysis: How Much to Give and How to Give it**
Oren Friedman, MD
- 2:15 **ECMO in PE: Life Saving or just Preserving?**
Vadim Gudzenko, MD
- 2:30 **Panel and Q&A**
- 2:45 **BREAK**

Special Topics in PE

Moderator: *Marcella Calfon Press, MD, PhD, FACC*

- 3:15 **CTEPH: Who and How to Follow after Acute PE**
Victor Tapson, MD
- 3:30 **CTEPH: Treatment Options in 2018**
Rajan Saggur, MD
- 3:45 **PE in Special Populations: Lung Transplant, Morbid Obesity and Pediatrics**
Aaron S. Weinberg, MD, MPhil
- 4:00 **PE in Special Populations: Pregnancy, High Bleeding Risk and the Patient with Cancer**
Olcay Aksoy, MD, FACC
- 4:15 **Panel and Q&A**
- 4:30 **BREAK**

Virtual PERT

Moderator: *John Moriarty, MD, FSIR*

- 4:45 **Virtual PE Response Team: Expert Faculty Debate Their Best and Worst Cases**
Panelists: *Drs. Calfon Press, Channick, Friedman, Manthripragada, Soverow, Tapson, Wang*
- 6:00 **ADJOURN**

General Information

Registration Fee

- \$150 Physicians
- \$50 Nurses, Allied Health Professionals
- \$50 Fellows, Residents

Refunds

Cancellations must be received in writing by **Friday, October 19, 2018** and will be subject to a \$50 processing fee. No refunds will be granted after that date. If, for any reason, the course must be cancelled, discontinued, or rescheduled by the Office of Continuing Medical Education, a full refund will be provided.

Enrollment

By Mail

Use the form attached. Mail to the UCLA Office of Continuing Medical Education, David Geffen School of Medicine at UCLA, Pulmonary Embolism Care, 10920 Wilshire Blvd., Ste. 1060, Los Angeles, CA 90024-6512

Online

Go to www.cme.ucla.edu/courses, click on PE and U: A Multidisciplinary Approach to Pulmonary Embolism Care, and click on the registration information section. You may use your MasterCard, VISA, American Express or Discover card to register online.

By Phone

Use your American Express, MasterCard, VISA or Discover card.
Call (310) 794-2620.

By FAX

Send the completed enrollment form with credit card information and authorizing signature.
Fax (310) 794-2624.

Program Location

UCLA Meyer and Renee Luskin
Conference Center
425 Westwood Plaza
Los Angeles, CA 90095
855-522-8252

Directions and Parking

From the 405 freeway, exit Wilshire Blvd., east toward Westwood. Turn left on Westwood Blvd., travel past Charles E. Young Dr. South and turn left on Structure 8 driveway. Drive up the ramp to the rooftop level to park. Pay per license plate at the kiosk and display the parking permit on your dash. All day self parking is \$12.00. Walk down one level and across pedestrian walkway toward Luskin Conference Center. Enter through Luskin Conference Center doors on right side.

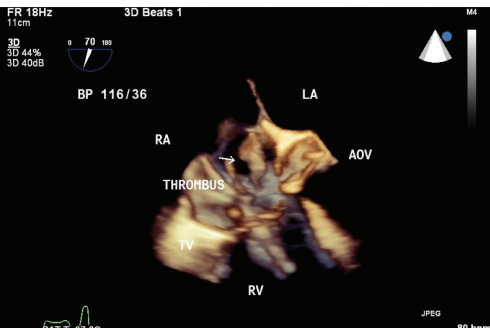
Accreditation

The Office of Continuing Medical Education, David Geffen School of Medicine at UCLA is accredited by the Accreditation Council for Continuing Medical Education to provide continuing medical education for physicians.

The Office of Continuing Medical Education, David Geffen School of Medicine at UCLA designates this live activity for a maximum of *7.75 AMA PRA Category 1 Credits™*. Physicians should claim only the credit commensurate with the extent of their participation in the activity.

Disclosure Statement

The FDA has issued a concept paper which classifies commercial support of scientific and educational programs as promotional unless it can be affirmed that the program is "truly independent" and free of commercial influence. In addition to independence, the FDA requires that nonpromotional, commercially supported education be objective, balanced, and scientifically rigorous. The policy further states that all potential conflicts of interest of the CME staff and faculty be fully disclosed to the program's participants. In addition, Accreditation Council for Continuing Medical Education policy mandates that the provider adequately manages all identified potential conflicts of interest prior to the program. We at UCLA fully endorse the letter and spirit of these concepts.



UCLA Office of Continuing Medical Education
David Geffen School of Medicine at UCLA
405 Hilgard Ave, MC29
Box 956938
Los Angeles, California 90095-6938

Non-Profit Org.
U.S. Postage
PAID
UCLA

PE and U: A Multidisciplinary Approach to Pulmonary Embolism Care

November 17, 2018
UCLA Meyer and Renee Luskin
Conference Center
Los Angeles, California