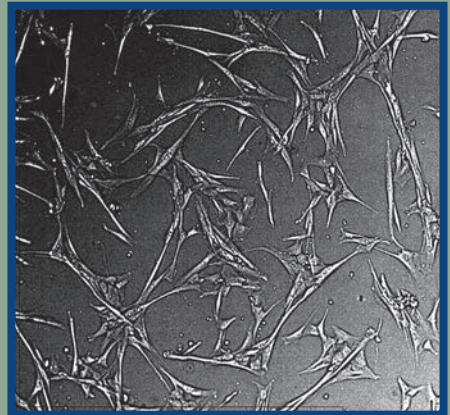
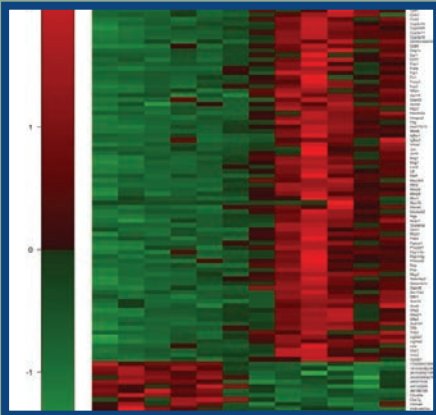
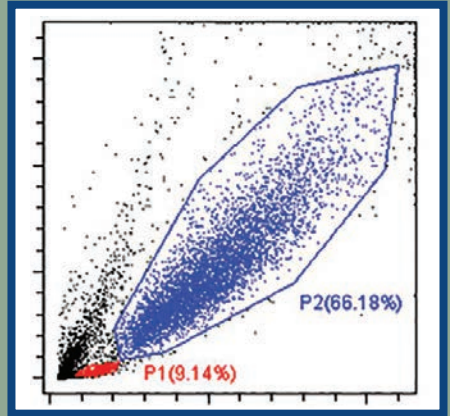
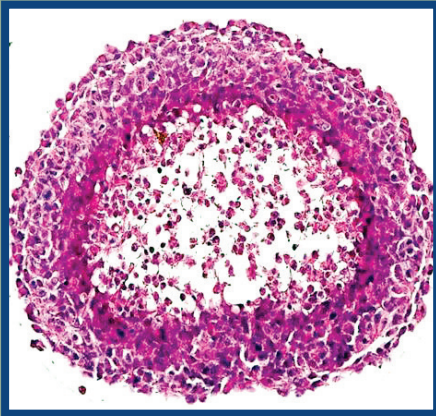




David Geffen
School of Medicine

8th International Symposium on Malignant Pleural Mesothelioma



September 29, 2018

UCLA Meyer & Renee Luskin
Conference Center
Los Angeles, California

CME OFFICE OF
CONTINUING
MEDICAL
EDUCATION
DAVID GEFFEN SCHOOL OF MEDICINE at UCLA

PACIFIC
MESOthelioma
CENTER
at Pacific Heart, Lung & Blood Institute

Malignant pleural mesothelioma (MPM) is an unusual cancer because it grows throughout the chest cavity as a diffuse process rather than a typical solid nodule or mass. Because of this unique characteristic, it has very specific treatment issues. MPM also is a rare tumor with less than 3,000 new cases annually, and therefore, most physicians, even pulmonologists and medical oncologists, typically only see these patients infrequently. Despite this, it is critical that all physicians involved in the care of MPM patients be familiar with the important issues in this disease and possess a thorough understanding regarding the tumor itself, its evaluation process, staging, treatment and the role of multidisciplinary management of these patients. This includes the role and extent of surgery as well as radiation, chemotherapy and newer targeted therapies and immunotherapy. Robert B. Cameron, MD, the course organizer and the Director of the UCLA Comprehensive Mesothelioma Program, has had over 30 years of experience with treating patients with MPM, including pleurectomy and decortication surgical procedures and a number of complementary adjuvant therapies with the goal of treating this deadly disease like a chronic illness, similar to hypertension and diabetes.

Course Objectives

At the completion of this course, participants should be able to:

- Apply the current role of surgery, radiation, chemotherapy, and immunotherapy in a multidisciplinary treatment program
- Differentiate between proton intensity modulated radiation therapy and standard external beam radiation therapy
- Assess the effects of surgery and radiation on the immune system
- Recognize various types of biological and immunological therapies and their potential effects on the tumor microenvironment
- Identify the possible novel roles of breath testing and MRI in mesothelioma assessment

Target Audience

Mesothelioma experts who want to learn/share experiences about mesothelioma treatments.

Course Chair

Robert B. Cameron, MD, FACS

Professor of Clinical Cardiothoracic Surgery and Surgical Oncology
Director, Comprehensive Mesothelioma Program
David Geffen School of Medicine at UCLA
Chief, Thoracic Surgery
West Los Angeles VA Medical Center
Los Angeles, California

Guest Faculty

Kevin G. Blyth, MD, MBChB, FRCP

Consultant Respiratory Physician
NRS Senior Research Fellow
Honorary Clinical Associate Professor
Institute of Infection, Immunity & Inflammation
University of Glasgow, Scotland

Nicolas Boisgerault, PhD

CRCINA Cancer Research Center
Nantes, Pays de la Loire, France

Lisa M. Coussens, PhD

Hildegard Lamfrom Endowed Chair in Basic Science
Professor and Chairwoman, Department of Cell, Developmental and Cancer Biology
Associate Director for Basic Research, Knight Cancer Institute
Oregon Health and Science University
Portland, Oregon

Mikihiro Kohno, MD, PhD

Research Fellow
Latner Thoracic Surgery Research Laboratories
Toronto General Research Institute
University Health Network, University of Toronto
Toronto, Ontario, Canada

Marc Ladanyi, MD

The William Ruane Chair in Molecular Oncology
Attending Pathologist and Chief, Molecular Diagnostics Service
Member, Human Oncology and Pathogenesis Program, Memorial Sloan Kettering
New York, New York

Kevin Lamote, PhD

University of Antwerp
Antwerp, Belgium

Charles B. Simone II, MD

Medical Director, Maryland Proton Treatment Center
Fellowship Director, Advanced Radiation Modalities Fellowship
Director, Stereotactic Radiation Therapy Program
Associate Professor, Department of Radiation Oncology
University of Maryland Medical Center
Baltimore, Maryland

Wesley Wilson, PhD Candidate

University of Western Australia/ National Centre for Asbestos Related Diseases
Perth, Australia

Faculty

Fereidoun Abtin, MD

HS Clinical Assistant Professor
Department of Radiological Sciences
David Geffen School of Medicine at UCLA
Los Angeles, California

Diana Lin Gage, MD, PhD

Director, Stereotactic Radiosurgery Program
Radiation Oncology Service
West Los Angeles VA Medical Center
Assistant Professor
Department of Radiation Oncology
David Geffen School of Medicine at UCLA
Los Angeles, California

Olga Olevsky, MD

Health Sciences Assistant Clinical Professor
Santa Monica Oncology
David Geffen School of Medicine at UCLA
Santa Monica, California

Masahide Tone, PhD

Director of Research, Senior Researcher
The Pacific Heart, Lung and Blood Institute
Los Angeles, California

8:00 **Registration and Breakfast**

9:10 **Welcome**

Robert B. Cameron, MD, FACS

Morning Clinical Session I

Moderators: *Robert B. Cameron, MD, FACS and Olga Olevsky, MD*

9:15 **Perioperative Immunotherapy: Surgery as Immunotherapy**

Robert B. Cameron, MD, FACS

9:45 **Mesothelioma Clinical Trials: Novel and Combination Systemic Therapies**

Olga Olevsky, MD

10:15 **An Exhaled Breath Biopsy Earmarks Exclusive Screening for Malignant Pleural Mesothelioma**

Kevin Lamote, PhD

10:45 **Discussion**

11:00 **Break**

Morning Clinical Session II

Moderators: *Diana Lin Gage, MD, PhD and Fereidoun Abtin, MD*

11:15 **Novel MRI Assessment of Mesothelioma Tumor Volume**

Kevin G. Blyth, MD, MBChB, FRCP

11:45 **Toxicities and Outcomes Using Whole Pleural Intensity – Modulated Proton Therapy**

Charles B. Simone II, MD

12:15 **Understanding the Immune Response to Radiotherapy in a Dual Tumor Model of Mesothelioma**

Wesley Wilson, PhD Candidate

12:45 **Discussion**

1:00 **Lunch**



Afternoon Research Session

Moderators: *Robert B. Cameron, MD, FACS and Masahide Tone, PhD*

- 2:00 **Integrative Molecular Characterization of Mesothelioma: Cancer Genome Atlas Project**
Marc Ladanyi, MD
- 2:30 **The Immune Microenvironment: Focus on Macrophages and T-Cells as Regulators of Tumor Progression and Therapeutic Responses**
Lisa M. Coussens, PhD
- 3:00 **A Modified Measles Virus Against Mesothelioma: Oncolytic and Immunotherapeutic Potential**
Nicolas Boisgerault, PhD
- 3:30 **Immunotherapy using Gene Modified Mesenchymal Stem Cells**
Masahide Tone, PhD
- 4:00 **Overcoming the Immunosuppressive Tumor Microenvironment of Murine Malignant Mesothelioma**
Mikihiro Kohno, MD, PhD
- 4:30 **Discussion**
- 4:50 **Concluding Remarks**
Robert B. Cameron, MD, FACS
- 5:00 **Adjourn**



General Information

Conference Location

UCLA Meyer & Renee Luskin Conference Center
425 Westwood Plaza
Los Angeles, CA 90095
855-522-8252

Local Accommodations

Please note there are no room blocks reserved at any location. Any special rates are subject to change and subject to availability.

UCLA Meyer & Renee Luskin Conference Center
855-522-8252

Palomar Hotel

310-475-8711 (*Ask for the UCLA rate*)

The Beverly Hilton

310-274-7777 (*Ask for the UCLA rate*)

Parking

Self-Parking \$12

The UCLA Meyer & Renee Luskin Conference Center self-parking is located in Lot 8. A parking attendant will be on duty from 7:00-9:00 AM. If you arrive outside of this time frame, please visit the parking kiosk on Westwood Plaza to pay for your parking permit. Participants are responsible to pay for their own parking charges at a rate of \$12 per vehicle, cash only.

Valet parking is reserved only for overnight guests at the Center.

Directions

From the 405 freeway, exit Wilshire Blvd., east toward Westwood. Turn left on Westwood Blvd., travel past Charles E. Young Dr. South and turn left on Structure 8 driveway. Drive up the ramp to the rooftop level to park. There is a walkway that connects the structure to the Center.

Fees

Pre-registration fee

Physicians: \$165
Nurses: \$100
Family & Patients: \$75
Students: \$25*
Legal Profession: \$450

Late registration fee (starting September 6)

Physicians: \$225
Nurses: \$150
Family & Patients: \$100
Students: \$40*
Legal Profession: \$650

*must show student ID on-site

Early registration is recommended, as space is limited.

Refunds

Cancellations must be received in writing by August 31, 2018 and will be subject to a \$75 processing fee. A full refund will be provided if for any reason the course must be cancelled or rescheduled.

Enrollment

Online

Go to www.cme.ucla.edu/courses and click on 8th International Symposium on Malignant Pleural Mesothelioma. You may use your MasterCard, Visa, Discover, or American Express card to register.

By Mail

Enroll by mail with your American Express, Discover, MasterCard or Visa by using the form attached. Mail to the Office of Continuing Medical Education, David Geffen School of Medicine at UCLA, 10920 Wilshire Blvd., Suite 1060, Los Angeles, CA 90024.

By Fax

Send the completed enrollment form with credit card information and authorizing signature to (310) 794-2624.

By Phone

Call (310) 794-2620 to use your MasterCard, Visa, American Express, or Discover card.

Accreditation

The Office of Continuing Medical Education, David Geffen School of Medicine at UCLA is accredited by the Accreditation Council for Continuing Medical Education to provide continuing medical education for physicians.

The Office of Continuing Medical Education, David Geffen School of Medicine at UCLA designates this live activity for a maximum of 6.5 *AMA PRA Category 1 Credits™*. Physicians should claim only the credit commensurate with the extent of their participation in the activity.

Disclosure

The FDA has issued a concept paper which classifies commercial support of scientific and educational programs as promotional unless it can be affirmed that the program is "truly independent" and free of commercial influence. In addition to independence, the FDA requires that non-promotional, commercially supported education be objective, balanced, and scientifically rigorous. The policy further states that all potential conflicts of interest of the CME staff and faculty be fully disclosed to the program's participants. In addition, Accreditation Council for Continuing Medical Education policy mandates that the provider adequately manages all identified potential conflicts of interest prior to the program. We, at UCLA, fully endorse the letter and spirit of these concepts.

Please visit our website for other UCLA CME offerings

www.cme.ucla.edu

Mail Application for Enrollment (please print)

Course Title & Number		Amount
8th International Symposium on Malignant Pleural Mesothelioma		M189-16
Early registration fee (before Sept. 6) Physicians: \$165 Nurses: \$100 Family & Patients: \$75 Students: \$25 Legal Profession: \$450	Late registration fee (starting Sept. 6) Physicians: \$225 Nurses: \$150 Family & Patients: \$100 Students: \$40 Legal Profession: \$650	

 LAST FOUR DIGITS OF YOUR SOCIAL SECURITY NUMBER

 NAME (FIRST/MIDDLE/LAST) DEGREE MALE FEMALE

 PREFERRED MAILING ADDRESS

 CITY/STATE/ZIP

 SPECIALTY

(_____) _____ (_____) _____
 AREA CODE DAYTIME PHONE AREA CODE FAX

 E-MAIL ADDRESS

CHECK enclosed, payable to *The Regents of the University of California*

CHARGE American Express Discover MasterCard Visa

Card Number _____

Authorizing Signature _____

Expiration Date (Mo/Yr) ____ / ____

**Mail to: UCLA Office of Continuing Medical Education
 David Geffen School of Medicine at UCLA
 Mesothelioma Symposium
 10920 Wilshire Blvd., Suite 1060
 Los Angeles, CA 90024-6512**

David Geffen School of Medicine at UCLA
Mesothelioma Symposium
10920 Wilshire Blvd., Suite 1060
Los Angeles, CA 90024-6512

Non-Profit Org.
U.S. Postage
PAID
UCLA

8th International Symposium on Malignant Pleural Mesothelioma

September 29, 2018

**UCLA Meyer & Renee Luskin
Conference Center
Los Angeles, California**