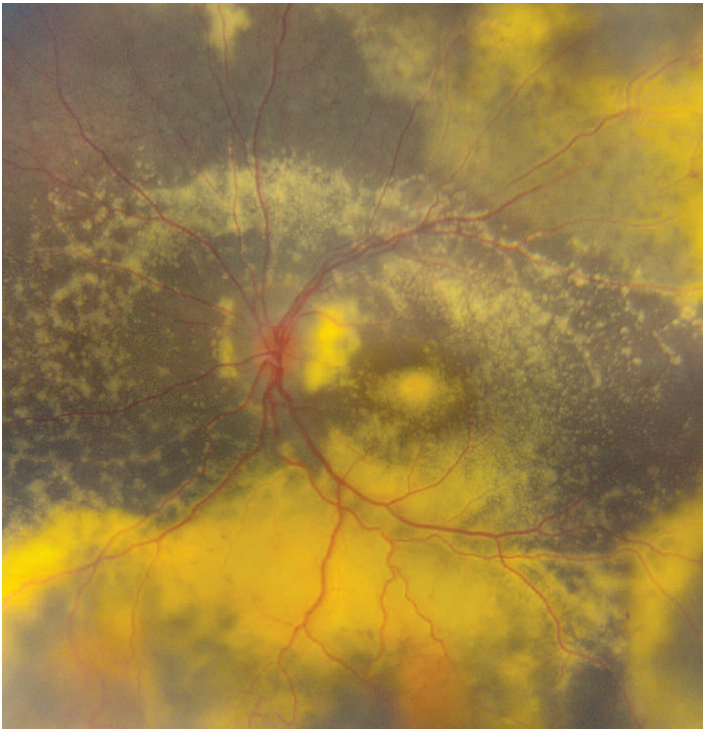




PACIFIC  
RETINA  
CLUB



David Geffen  
School of Medicine



**March 15, 2019**

**California NanoSystems Institute  
at UCLA  
Los Angeles, CA**

**CME** OFFICE OF  
CONTINUING  
MEDICAL  
EDUCATION

DAVID GEFKEN SCHOOL OF MEDICINE at **UCLA**

**T**he **Pacific Retina Club** will hold its SEVENTH ANNUAL meeting on March 15, 2019, at the California NanoSystems Institute at UCLA. We would like to invite you to participate in this retinal conference and present your most interesting case of the year. Everyone has seen a great case in the last year and we are hoping that you will share yours with us. Each case will be allotted 3 minutes for presentation and 4 minutes for discussion. Discussions promise to be energetic, dynamic, and insightful.

There will be a dinner reception following Session 2 on Friday. Those wishing to enjoy West Los Angeles are encouraged to arrive on Thursday to spend time touring the city.

Pacific Retina Club attendees are also encouraged to register and attend the International Retinal Imaging Symposium (IntrRIS 2019) that will take place at the same venue the next day, Saturday, March 16, 2019. IntrRIS 2019 will bring together world renown experts to discuss new technologies and applications of retinal imaging.

For information on the International Retinal Imaging Symposium (IntrRIS 2019), please visit the UCLA CME Live Courses listing at [www.cme.ucla.edu](http://www.cme.ucla.edu).

## ■ Course Directors

---

### **H. Richard McDonald, MD**

Clinical Professor

Department of Ophthalmology

California Pacific Medical Center, San Francisco

*hrmcdonald@westcoastretina.com*

### **Srinivas R. Sadda, MD**

President

Professor of Ophthalmology

Doheny Eye Institute

David Geffen School of Medicine

University of California – Los Angeles

*ssadda@doheny.org*

### **David Sarraf, MD**

Clinical Professor of Ophthalmology

Retinal Disorders and Ophthalmic Genetics Division

Stein Eye Institute, UCLA

*dsarraf@ucla.edu*

The **Pacific Retina Club** was established to bring together retina specialists from the Western United States to discuss interesting retinal cases and exchange **KNOWLEDGE AND EXPERTISE** regarding the evaluation and management of common and rare retinal diseases. We promise a rewarding educational experience.



## Course Description

The Pacific Retina Club was established to bring together retina specialists from across the United States to discuss interesting retinal cases and exchange knowledge and expertise regarding the evaluation and management of common and rare retinal diseases.

## Objectives

**At the conclusion of this course, participants will be able to:**

- Educate retinal specialists and ophthalmologists regarding the application of advanced retinal imaging for the evaluation and management of retinal and choroidal disease through case presentations
- Update the retinal community in the U.S. and abroad regarding the most current guidelines regarding the diagnosis and treatment of retinal disorders
- Guide retinal specialists and ophthalmologists regarding the integration of novel retinal imaging technology into clinical practice and to guide specialists in the interpretation of the imaging using these advanced systems

## Schedule

**Friday, March 15, 2019**

11:00am – 12:00pm Brunch/Registration

### Session 1

12:00pm – 2:30pm Case Presentations

2:30pm – 3:00pm Break

### Session 2

3:00pm – 5:30pm Case Presentations

5:30pm – 6:00pm Alexander R. Irvine Lecture  
Alexander J. Brucker, MD  
Founder's Professor in Retinal & Vitreous Diseases  
Chief, Retina & Vitreous Service  
Vice-Chair, Scheie Eye Institute  
University of Pennsylvania Perelman School of  
Medicine, Philadelphia, Pennsylvania

6:00pm – 7:00pm Dinner

### Session 3

7:00pm – 9:30pm Case Presentations

## Cost

\$25 Registration Fee. There are no refunds for this course. If, for any reason, the course must be cancelled, discontinued, or rescheduled by the Office of Continuing Medical Education, a full refund will be provided.

## CME

### Accreditation

The Office of Continuing Medical Education, David Geffen School of Medicine at UCLA is accredited by the Accreditation Council for Continuing Medical Education to provide continuing medical education for physicians. The Office of Continuing Medical Education, David Geffen School of Medicine at UCLA designates this live activity for a maximum of 8 *AMA PRA Category 1 Credits™*. Physicians should claim only the credit commensurate with the extent of their participation in the activity.

### Disclosure Statement

The FDA has issued a concept paper which classifies commercial support of scientific and educational programs as promotional unless it can be affirmed that the program is "truly independent" and free of commercial influence. In addition to independence, the FDA requires that non-promotional, commercially supported education be objective, balanced, and scientifically rigorous. The policy further states that all potential conflicts of interest of the CME staff and faculty be fully disclosed to the program's participants. In addition, Accreditation Council for Continuing Medical Education policy mandates that the sponsor adequately manage all identified potential conflicts of interest prior to the program. We, at UCLA, fully endorse the letter and spirit of these concepts.

## Location

**California NanoSystems Institute at UCLA**

570 Westwood Plaza, Los Angeles, CA 90095

## Directions and Parking

From the 405 freeway, exit on Wilshire Blvd. East. Proceed on Wilshire Blvd. to Westwood Blvd. and make a left. Proceed north on Westwood Blvd., turn right on Charles E. Young Drive South and continue ½ a block. Turn left into Lot 9. There will be a parking attendant selling permits from 10:30AM-12:30PM. If you arrive outside of this time frame, please visit the parking kiosk on Westwood Plaza to pay for your parking permit. Participants are responsible to pay for their own parking charges at a rate of \$12 per vehicle, cash only. Please park on the 6th floor (roof top). The CNSI Building is built onto the roof level of the Lot 9 Parking Structure. Use the walkway/bridge on the far left side to make your way around to the front entrance of CNSI Building.

## Case Submissions

**I would like to present a case:** Yes \_\_\_\_\_ No \_\_\_\_\_

### Scheduling

Cases will be limited to 7 minutes; 3 minutes for presentation; 4 minutes for discussion.

***Everybody sees at least one fantastic case each year. Bring your best and teach everyone else.***

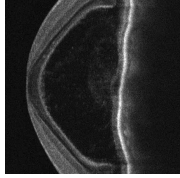
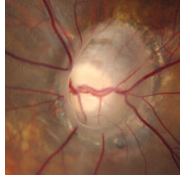
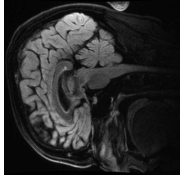
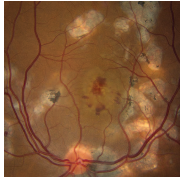


## **UCLA Office of Continuing Medical Education**

David Geffen School of Medicine at UCLA

405 Hilgard Avenue, MC 29

Los Angeles, California 90095-6938



PACIFIC  
RETINA  
CLUB